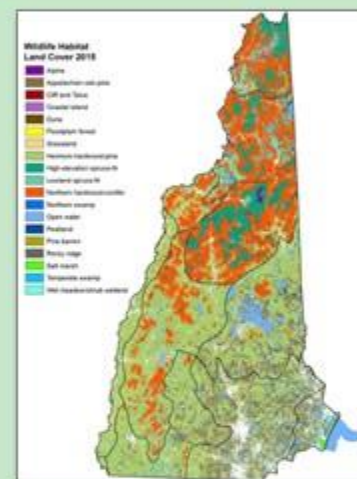
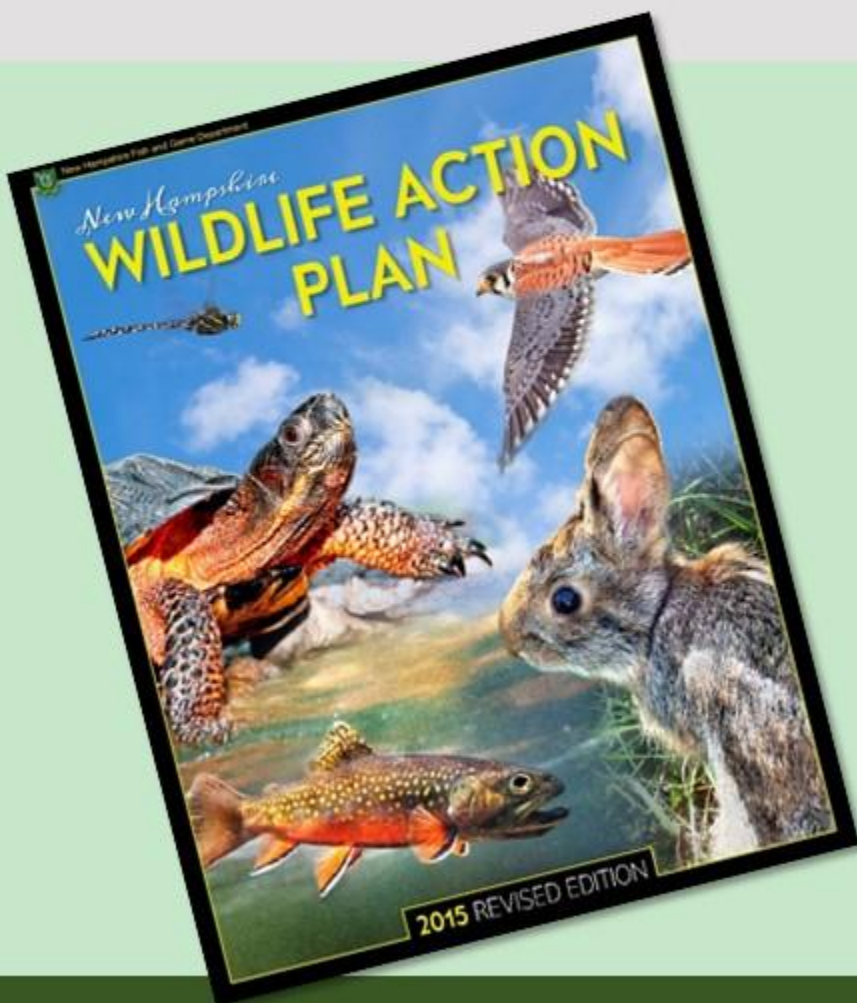


Data, Maps, Action!



What is the Wildlife Action Plan?

Restore rare wildlife and habitats.

Keep common species common.



Wildlife Action Plan Success



235,000 acres conserved



3,500+ received
technical assistance



species & habitats

2015 Revision

Professional Input



100 scientists

Public Input



Engagement Sessions

Online Survey

Public Comment Period

Over 1400 people!

2015 Revision

Data

Maps

Action

169 Species



27 Habitats

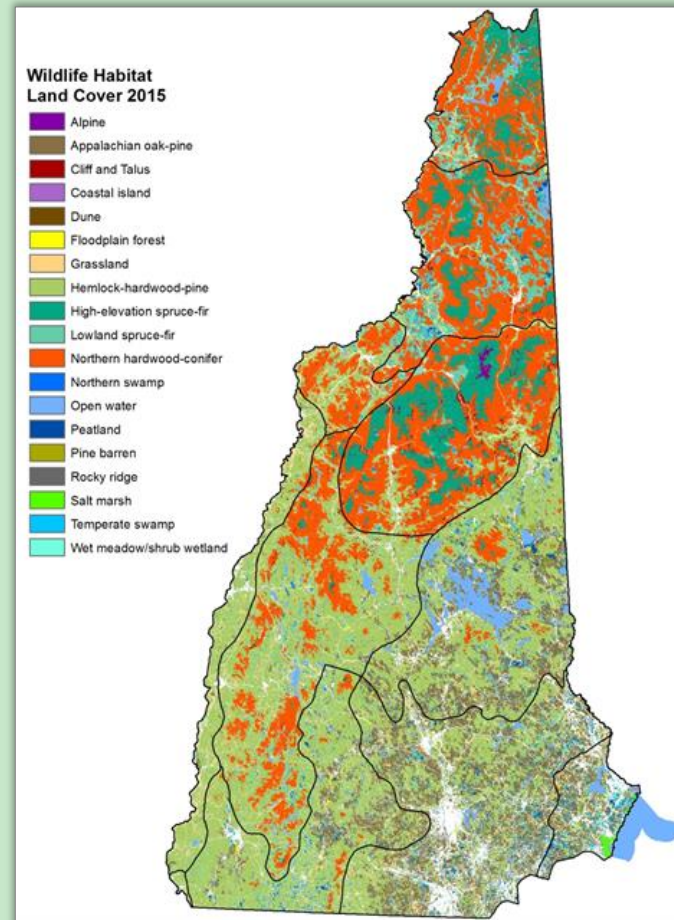


2015 Revision

Data

Maps

Action



2015 Revision

Data

Maps

Action



2015 Revision

Top Threats

- Pollution
- Climate Change
- Natural System Modifications
- Invasive and problematic species, genes, & diseases
- Development



Species Profiles

Black Racer



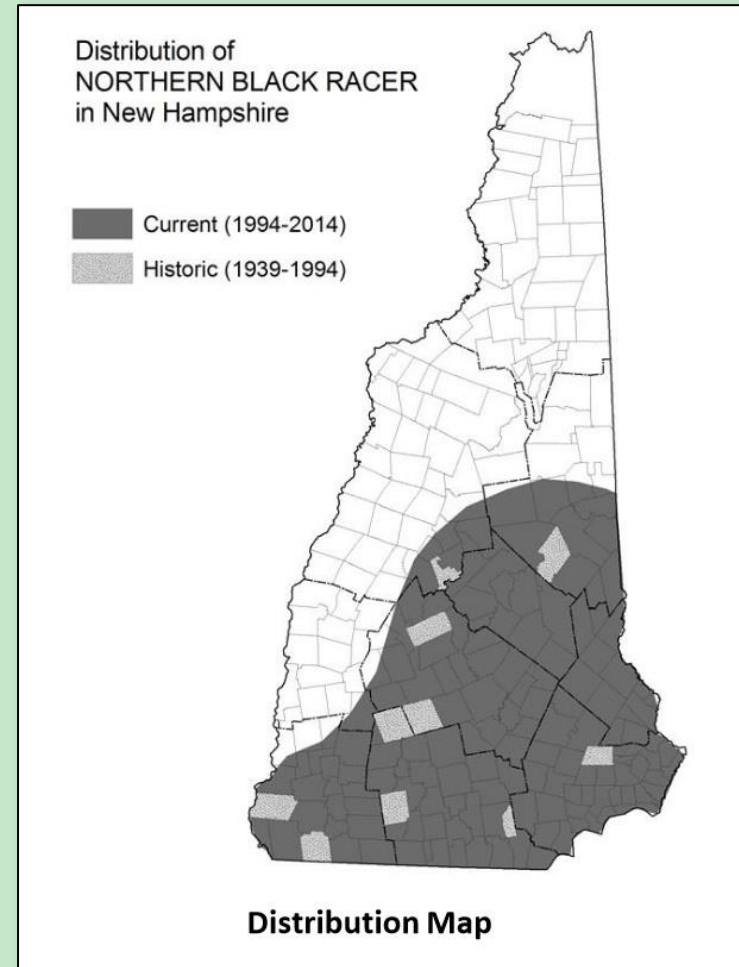
Species Profiles

Habitats



Species Profiles

Distribution



Species Profiles

Threats



Species Profiles

Actions



Habitat Profiles

Shrublands



Habitat Profiles

Distribution



Habitat Profiles

Threats



Habitat Profiles

Actions



American Eel

Habitat: Merrimack River

Threats : dams, water pollution, overharvesting

Actions:

- Protect water quality.
- Reduce effect of dams on migration.



Wood Turtle

Habitat: rivers and streams and their riparian areas

Threats: habitat loss, loss of nesting areas, collecting, mowing of agricultural fields

Actions:

- Protect riparian areas, especially shrubby areas and sandy nesting areas.
- Provide adequate stream flow all summer.
- Allow woody debris to collect in stream for hibernation habitat.
- Do not collect turtles as pets.



Bumblebees, other native bees and other pollinators

Habitat: anywhere with flowering plants

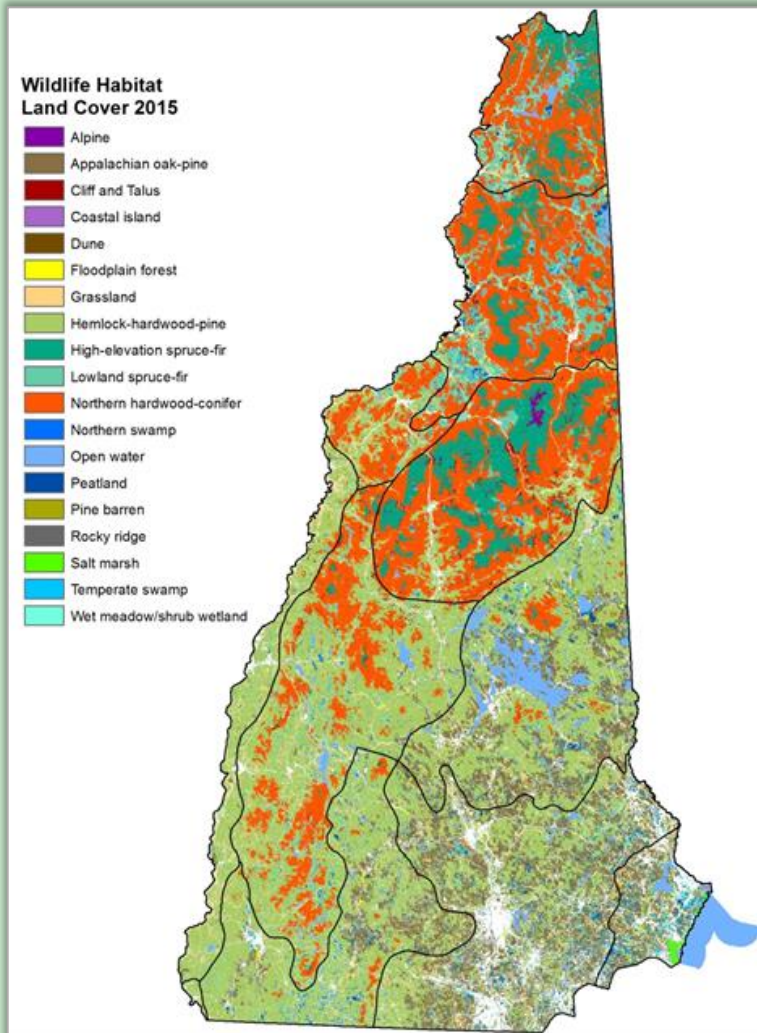
Threats: pesticides with particular emphasis on systemic ones including neonicotinoids, diseases

Actions:

- Create pesticide-free pollinator gardens, orchards, vegetable gardens.
- Create pesticide-free wildflower areas near commercial crops and orchards combined with IPM practices on the crops/trees.



Updated Maps

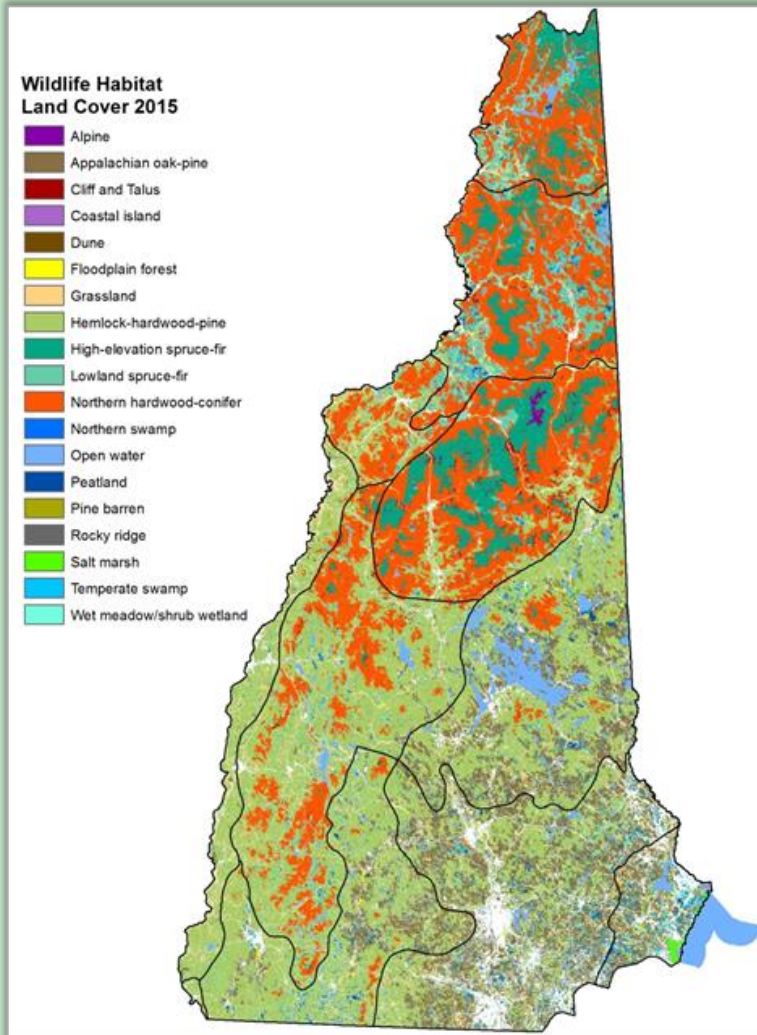


Based on Regional Data

**New Hampshire Data used to
improve accuracy**

Mapped to accuracy of $\pm \frac{1}{4}$ acre

Updated Maps



Forested Habitats

Wetland Habitats

**Small scale Terrestrial
Habitats**

Coastal habitats

Freshwater aquatic habitats

27 Key Habitat Types

Forest

High Elevation Spruce-Fir Forest
Low Elevation Spruce-Fir Forest
Northern Hardwood-Conifer Forest
Hemlock-Hardwood-Pine Forest
Appalachian Oak-Pine Forest

Other Terrestrial Habitats

Pine Barrens
Grasslands
Shrublands ← Not mapped, too ephemeral
Alpine
Rocky Ridge, Cliff, and Talus
Cave Mines and Other Subterranean
↖ Mapped, but sensitive habitat,
Not distributed

Coastal: Salt Marsh, Dunes, Coastal Islands, Estuarine, Marine

Freshwater Wetland

Floodplain Forests
Vernal Pools ← Not mapped
VT model using LiDAR?
Northern Swamps
Temperate Swamps
Peatlands
Marsh and Shrub Wetlands

Freshwater Aquatic

Large Warmwater Rivers
Warmwater Rivers and Streams
Coldwater Rivers and Streams
Warmwater Lakes and Ponds
Lakes and Pond with Coldwater Habitat

NEW HAMPSHIRE WILDLIFE HABITAT LAND COVER 2015

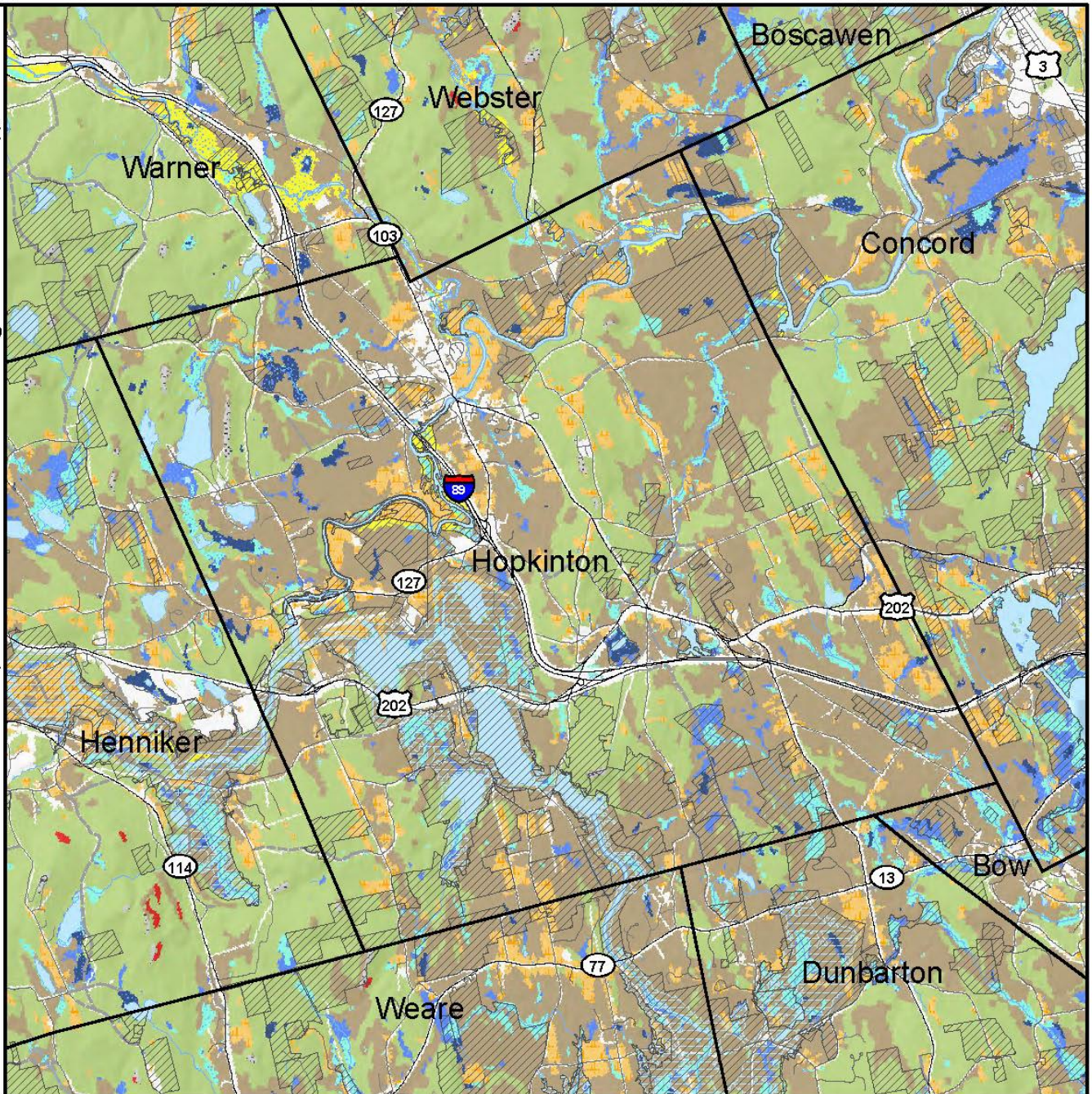
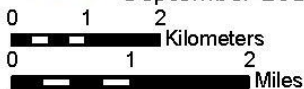


Base map data provided by NH GRANIT at UNH
December 2015. Intended for planning use only.

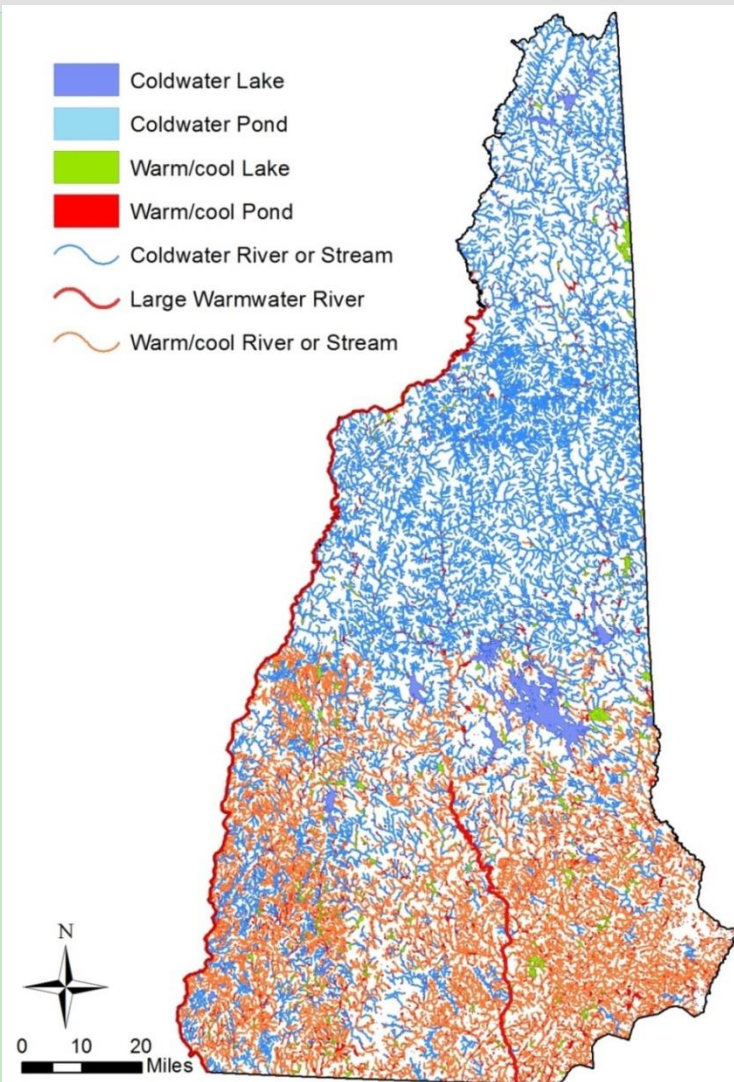


NEW HAMPSHIRE
**Wildlife Action
Plan**

September 2015



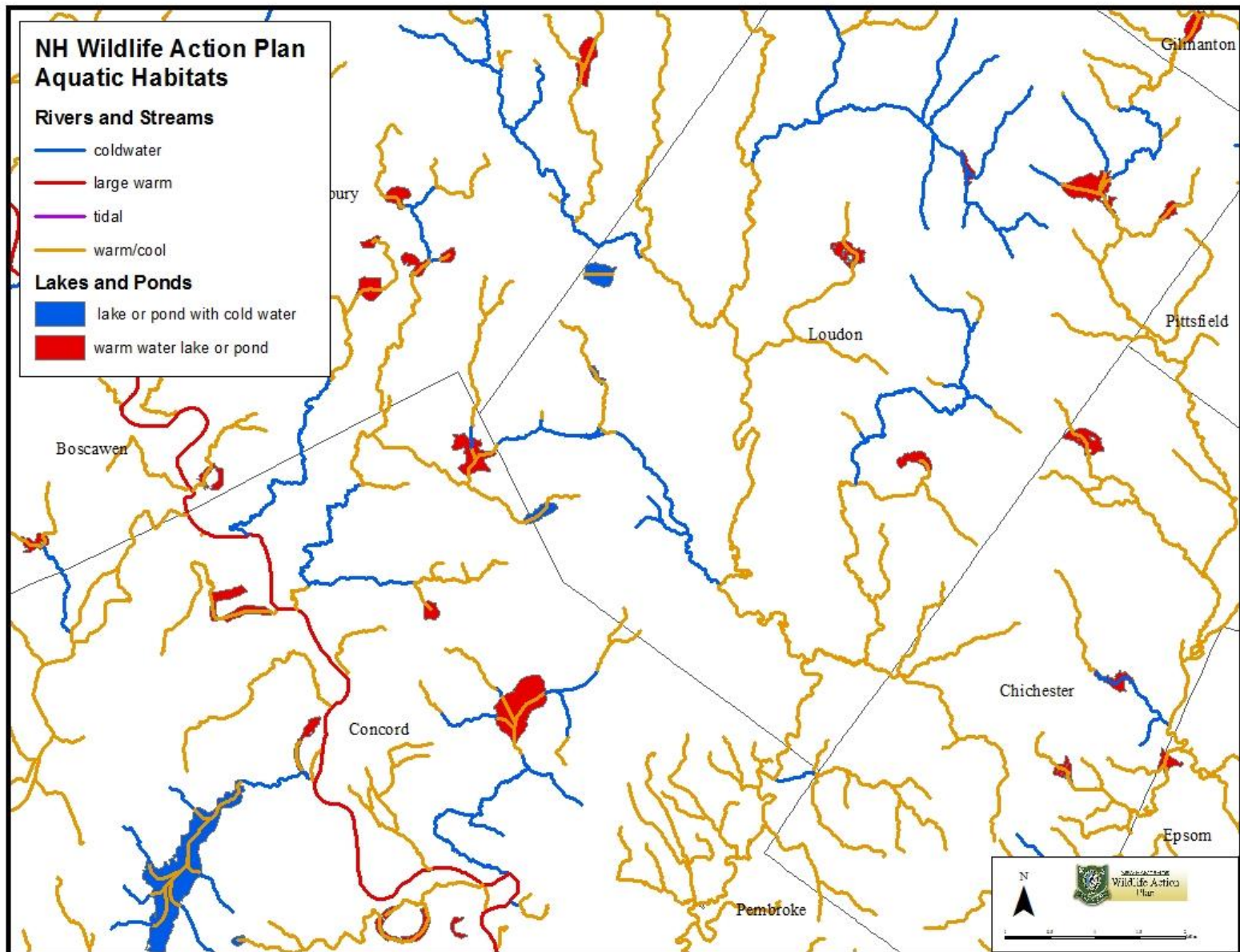
Aquatic Habitat Maps NEW



Based on :

- Stream Size
- Temperature
- Gradient
- Geology (buffering)

Aquatic Habitat Maps NEW

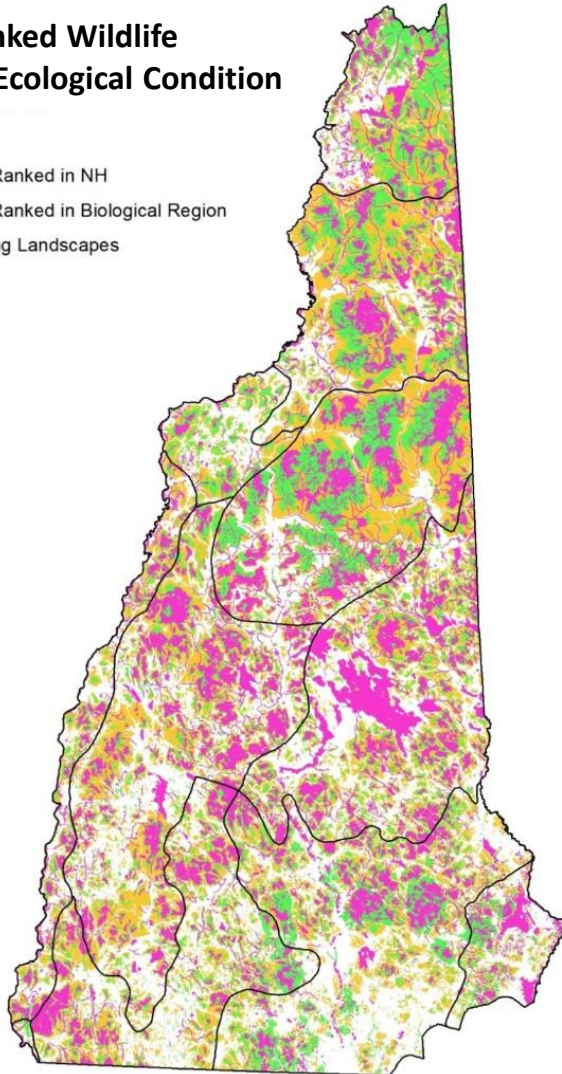


Updated Maps

Highest Ranked Wildlife Habitat by Ecological Condition

WAPTIER

- 1 Highest Ranked in NH
- 2 Highest Ranked in Biological Region
- 3 Supporting Landscapes



Biological factors

- rare plant & animal species, biodiversity

Landscape factors

- size of habitat, proximity to other patches of that habitat

Human impact

- Effects of development, roads and utility corridors and pollutants

2015 HIGHEST RANKED WILDLIFE HABITAT BY ECOLOGICAL CONDITION

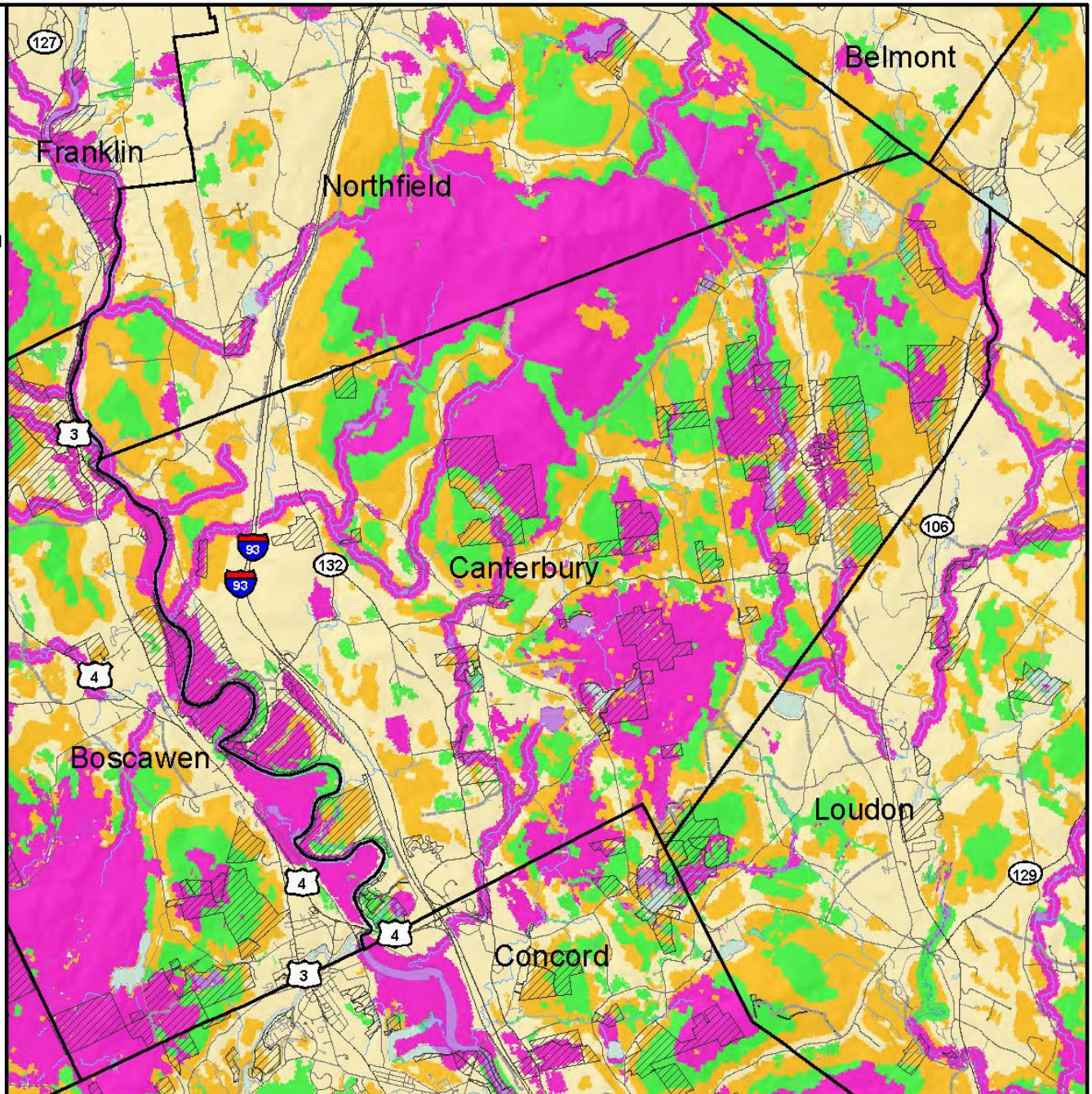
 Highest Ranked Habitat in New Hampshire

 Highest Ranked Habitat in the Biological Region

Biological region = TNC ecoregional subsection for terrestrial habitats or Aquatic Resource Mitigation region for wetlands and floodplain forest.

 Supporting Landscapes

 Conservation or public



Base map data provided by NH GRANIT at UNH December 2015. Intended for planning use only.



NEW HAMPSHIRE
Wildlife Action Plan
September 2015



Action!

Landowners



Communities



Land Trusts



Action!

Make Habitat Happen



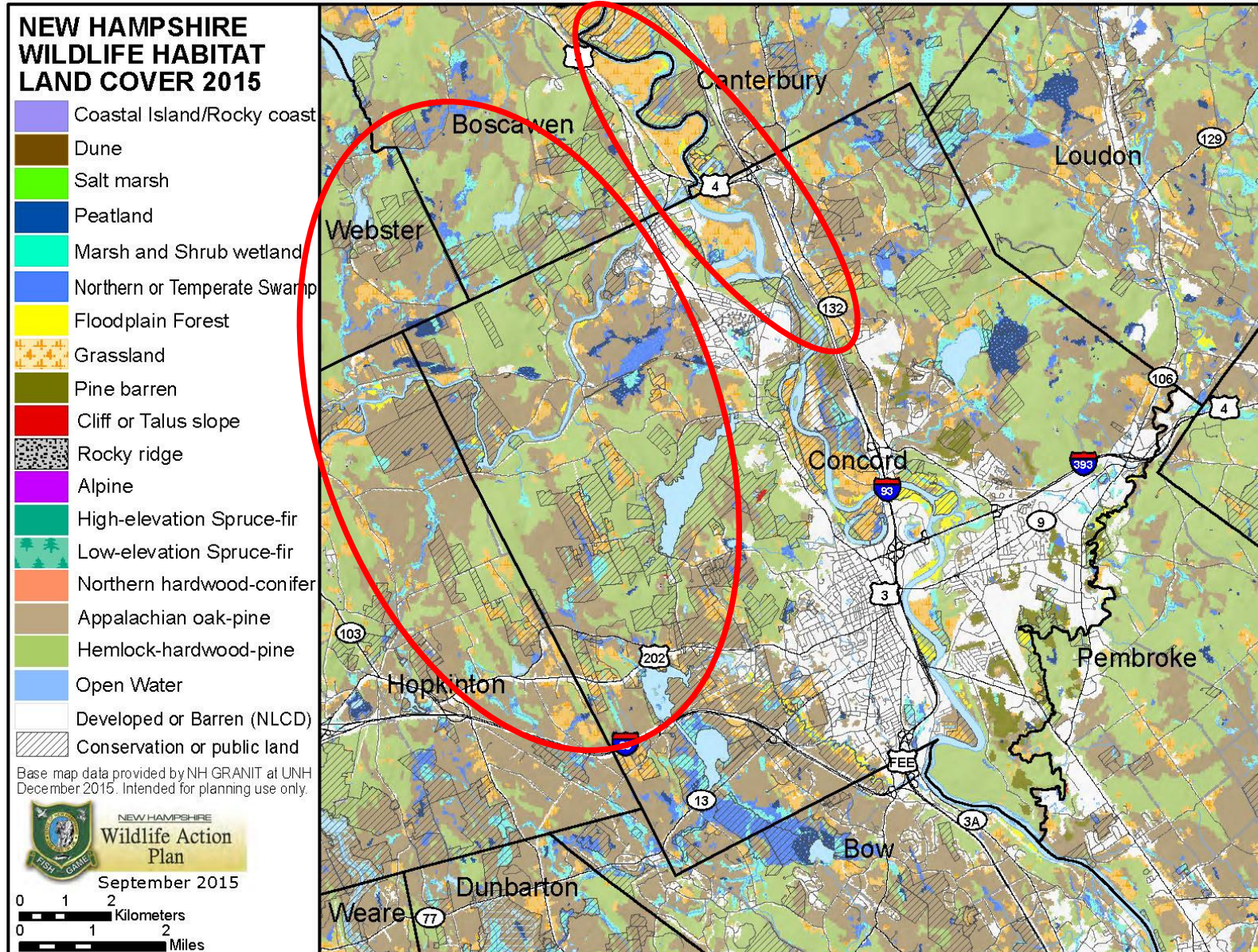
TAKINGACTIONFORWILDLIFE.ORG

Action!

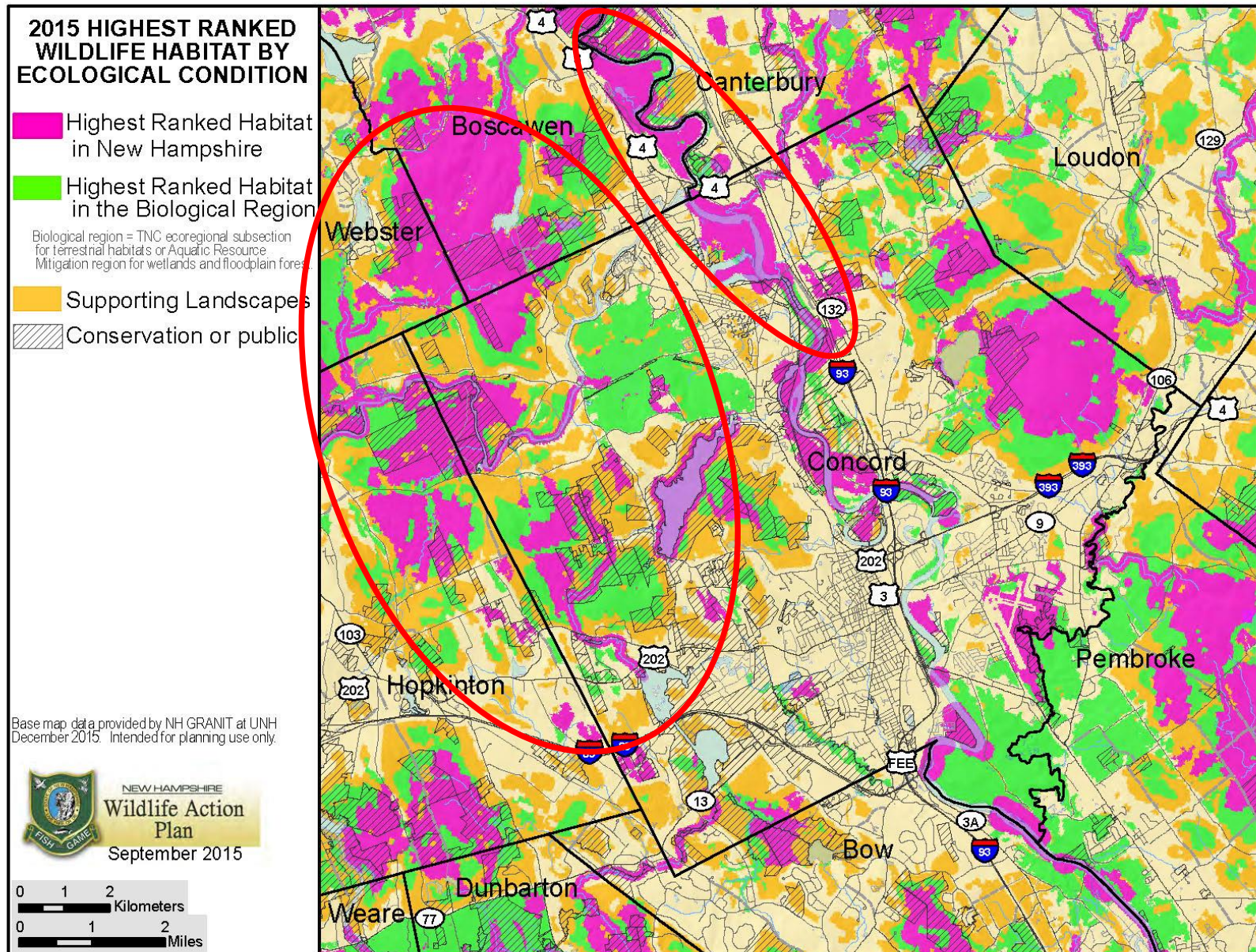
Plan for Wildlife



Action!



Action!



Action!

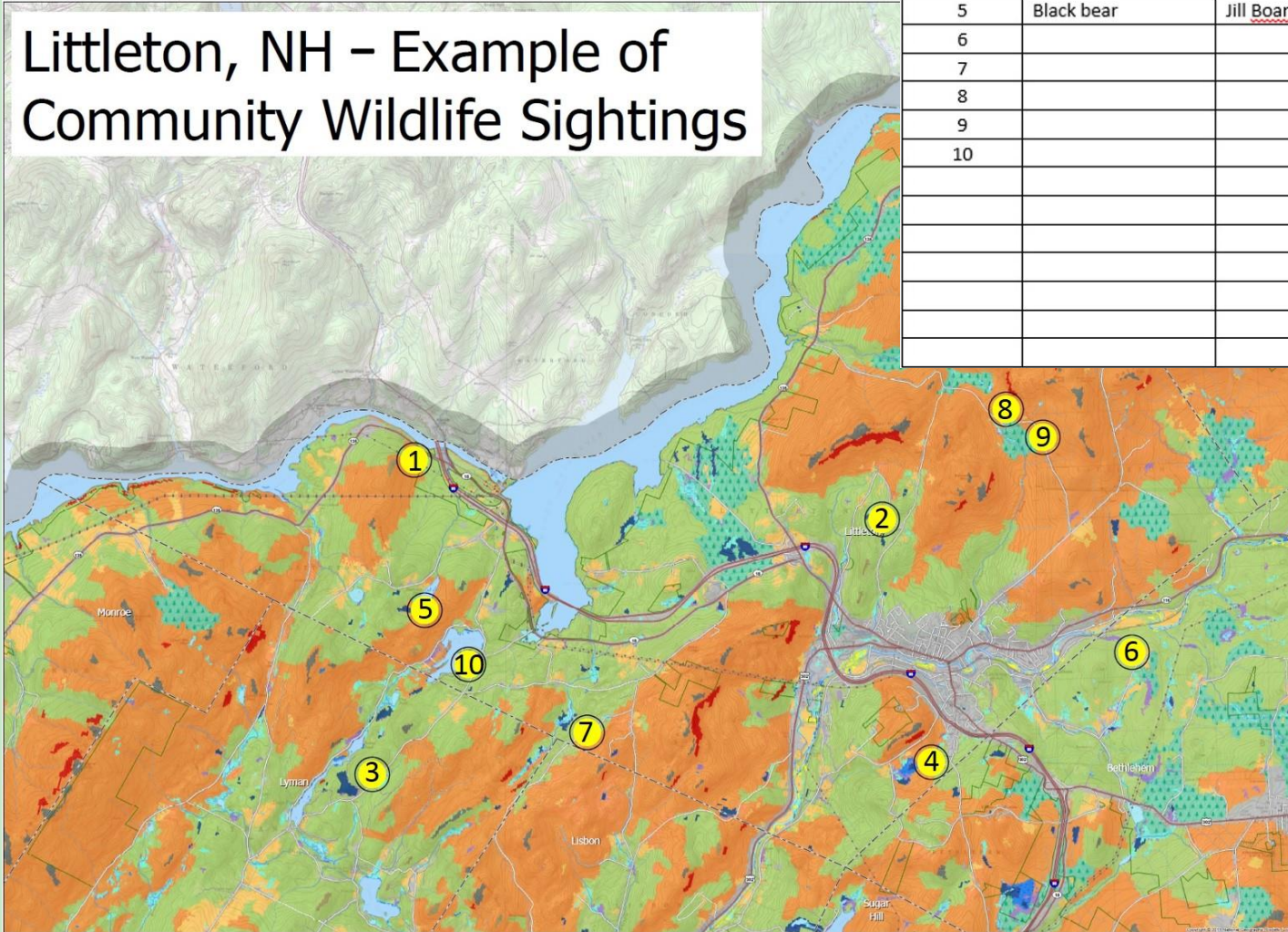
Know Your Wildlife



TAKINGACTIONFORWILDLIFE.ORG

Action!

Littleton, NH – Example of Community Wildlife Sightings



Dot number	Species observed	Observer	Contact information
1	Black bear	John Citizen	Phone or email address
2	Moose	Jane Resident	Phone or email address
3	Black bear	Bill Person	Phone or email address
4	Red fox	Ann Townsperson	Phone or email address
5	Black bear	Jill Boardmember	Phone or email address
6			
7			
8			
9			
10			

Action!

Explore Outdoors and Educate Others



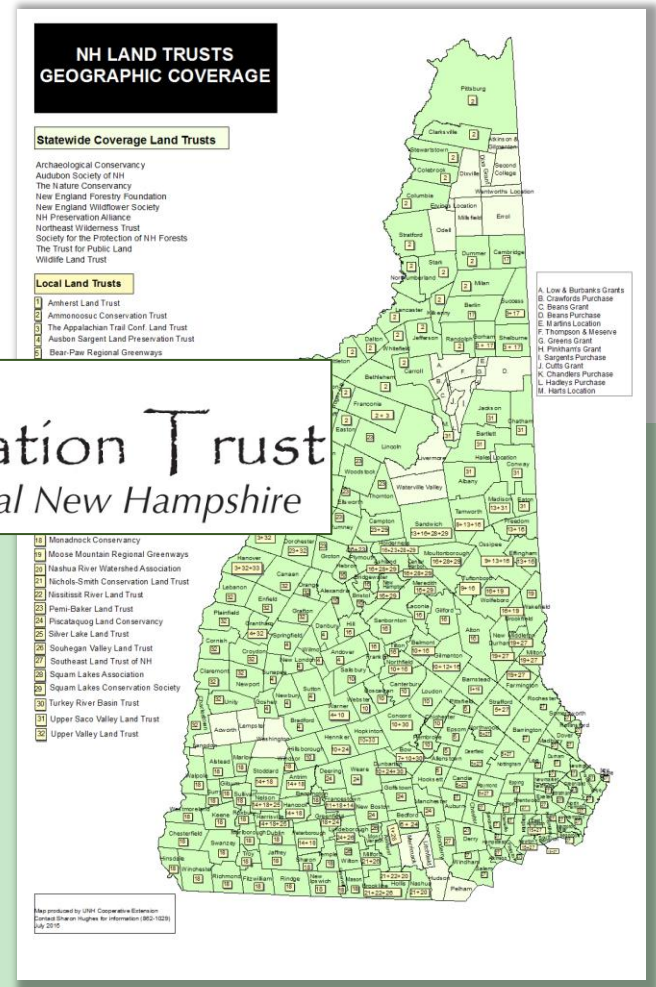
TAKINGACTIONFORWILDLIFE.ORG

Action!

Consider Conservation



Five Rivers Conservation Trust
Helping to protect open space in central New Hampshire



Resources

Taking Action for WILDLIFE



A Partnership of UNH Cooperative Extension and NH Fish and Game

[E-news signup](#)

[Contact](#)

[About](#)

[Communities](#)

[Conservation Groups](#)

[Landowners](#)

[Commonly Used
Resources](#)

[Stories](#)

[Actions You Can Take](#)



HOW YOU CAN TAKE ACTION

Resources to help landowners, communities, and conservation groups take action for wildlife and habitats
[Learn More](#)

1 2 3 4

Stories

Caring for Francestown's Conservation Lands

The Greatest Life Under the Sun: Helen

Newsletter

Wildlife Action Plan Maps - What's New?

How YOU Can Take Action

Species Spotlight: Horseshoe Crab

Featured Events

› Data, Maps, Action! What's New in the 2015 Wildlife Action Plan (Concord)
01/14/2016

Resources

Taking Action for WILDLIFE



A Partnership of UNH Cooperative Extension and NH Fish and Game

[E-news signup](#)

[Contact](#)

[About](#)

[Communities](#)

[Incorporating Wildlife
Into Town Documents](#)

[Natural Resources
Inventories](#)

[Conservation Planning for
Wildlife](#)

[Land Conservation](#)

[Using Local Regulations](#)

[Managing Wildlife Habitat](#)

[Public Outreach](#)

[Community Assistance
Program](#)

[Conservation Groups](#)

[Landowners](#)

[Commonly Used Resources](#)

[Stories](#)

[Actions You Can Take](#)

Communities



*The Taking Action for Wildlife Team can help your community take action for wildlife.
Download and complete the application form below (Word Document)*

**2016 Communities Taking
Action for Wildlife Application**

Learn what other communities have done in our new [Communities Take Action brochure!](#)

Wondering how you can work effectively with your community to develop and implement wildlife conservation projects? Learn how you can get organized by following these steps:

1. Incorporate Wildlife into Town Documents

Review your community's existing documents, e.g. natural

Taking Action for Wildlife
NEW HAMPSHIRE WILDLIFE ACTION PLAN

**COMMUNITIES TAKE ACTION
FOR WILDLIFE**

Resources

Taking Action for WILDLIFE



A Partnership of UNH Cooperative Extension and NH Fish and Game

[E-news signup](#)

[Contact](#)

[About](#)

[Communities](#)

[Conservation Groups](#)

[Landowners](#)

[Commonly Used Resources](#)

[Stories](#)

[Actions You Can Take](#)

Commonly Used Resources

Here are the resources that communities, conservation groups and landowners commonly use when Taking Action For Wildlife:

NH Wildlife Action Plan

NEW!! [2015 NH Wildlife Action Plan - Sections and Appendices](#)
[2015 Executive Summary](#)
[List of Species of Greatest Conservation Need and their Habitats](#)

Apply for Assistance from the Taking Action for Wildlife Team (no fee for assistance):

[2015 Communities Taking Action for Wildlife Application](#) (Word Document)

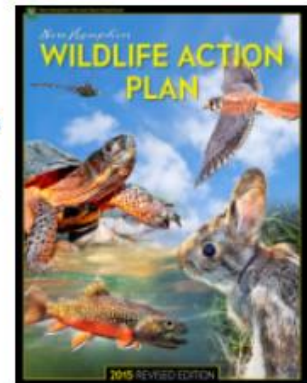
Maps:

[Habitat and Ranked Habitat Maps for NH Towns](#)

[GRANITView Mapper](#)

[Data on the amount of each habitat type in each town, watershed and ecoregion in the Wildlife Action Plan Maps](#)(Excel File)

Documents for Natural Resources Inventory:



Resources

Taking Action for WILDLIFE

A Partnership of UNH Cooperative Extension and NH Fish and Game

E-news signup

Contact

About

Communities

Conservation Groups

Landowners

Commonly Used Resources

Stories

Actions You Can Take

Actions You Can Take

There are many actions you can take to protect wildlife and habitats, whether you are a community board member, landowner, land trust, other conservation group or interested resident. The fact sheets below describe five key actions you can take, followed by a list of additional actions.

- [5 Ways Communities Can Take Action For Wildlife](#)
- [5 Ways Landowners Can Take Action For Wildlife](#)
- [5 Ways Land Trusts Can Take Action For Wildlife](#)

Learn what actions some communities and landowners have already taken. The brochures below provide their stories - visit the [Stories Page](#) for more stories about activities by communities, landowners and conservation groups

- [Communities Take Action for Wildlife](#)
- [Landowners Take Action for Wildlife](#)



5 WAYS LANDOWNERS CAN Take Action for WILDLIFE

- #1 Learn what's on your land.**
Take photos or keep a journal of wildlife observations to get to know your land better.
- #2 Small steps – big impact.**
Taking simple steps, like allowing parts of your lawn to grow tall, can make your backyard more wildlife-friendly.
- #3 Make habitat happen.**
Make your land better for wildlife by protecting, restoring, or managing habitat on your property.
- #4 Consider conservation.**
Learn more about conservation easements & other conservation options to protect your land from development and keep it as wildlife habitat in the future.
- #5 Get help.**
Work with professionals – like County Foresters, consulting foresters, and wildlife biologists – when managing your land.



TAKINGACTIONFORWILDLIFE.ORG

